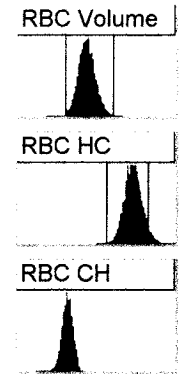
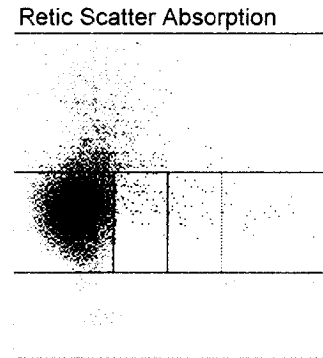
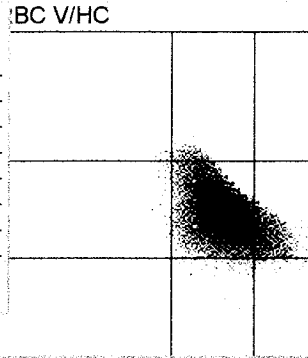


Dopingkjoring Playback
 Aspiration Date/Time 06-Feb-09 11:31:2
 Sample Type PATIENT
 SID ISU0012288B
 Rack & Position 9 2
 Sample Selectivity CBC/DIFF/RETIC
 Age & Sex U
 Instrument Number IR07450540
 Species Human
 Sequence 376
FOR LABORATORY USE ONLY

WBC Differential		
%	#	
WBC	5,3	x10 ⁹ cells/L
Neut	60,6	3,2 x10 ⁹ cells/L
Lymph	29,7	1,6 x10 ⁹ cells/L
Mono	4,4	0,2 x10 ⁹ cells/L
Eos	2,2	0,1 x10 ⁹ cells/L
Baso	0,6	0,0 x10 ⁹ cells/L
LUC	2,6	0,1 x10 ⁹ cells/L
NRBC	0,0	0,0 x10 ⁹ cells/L
LI	2,21	
MPXI	-14,4	



CBC		
WBC	5,3	x10 ⁹ cells/L
RBC	4,73	x10 ¹² cells/L
HGB	14,6	g/dL
Cellular HGB	15,2	g/dL
HCT	0,41	L/L
MCV	87,5	fL
MCH	30,8	pg
MCHC	35,2	g/dL
CHCM	36,6	g/dL
CH	31,9	pg
RDW	12,6	%
HDW	2,85	g/dL
PLT	385	x10 ⁹ cells/L
MPV	8,5	fL
PDW	48,7	%
PCT	0,003	L/L

RBC		
RBC	4,73	x10 ¹² cells/L
%Macro	0,3	
%Micro	0,4	
%Hypo	0,1	
%Hyper	5,0	
%Micro/%Hypo Ratio	5,52	

HGB		
HGB	14,6	g/dL
Cellular HGB	15,2	g/dL
HGB Delta	-0,6	g/dL
HGB Sample Trans	1,912	
HGB Baseline Trans	2,961	
HGB Sample Flatness	8	
HGB Baseline Flatness	6	

Retic		
Neg RBC	96,61	37538
Retic	3,39	160,4 x10 ⁹ cells/L
L Retic	80,85	1064
M Retic	16,41	216
H Retic	2,74	36
IRF-H	2,74	
IRF-M+H	19,15	
Retic Cells Acquired		44234
Retic Cells Analyzed		40195
Retic Gated Cells		38854
Retic Count		1316

Routine Retic		
%	#	
Retic	3,39	160,4 x10 ⁹ cells/L
CHR		34,3 pg
CHm		31,8 pg

RBC Rate

Retic Abs Flat

Retic Rate

HGB Trans

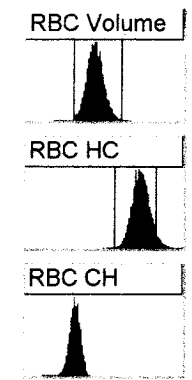
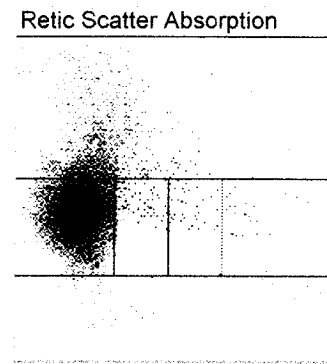
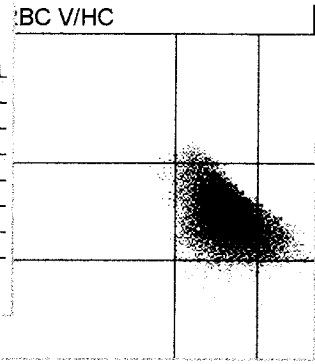
- Sample/System Flags
- B-NO
 - BIFR
 - B-SAT
 - BTO
 - B-NV
 - B-SUSP
 - CHCMCE
 - N-RBC
 - RBCIFR
 - HGB-PL
 - HGBIFR
 - WBC-CE
 - WBCSUB
 - MPO-D
 - PX-NO
 - PX-PL
 - PXIFR
 - PX-SAT
 - PXTO
 - PX-NV
 - RTC-L
 - RTCADA

Retic Parameters			
	Gated	Mature	Retic
MCV	86,5	85,9	103,5 fL
CHCM	H 37,0	37,2 H	33,2 g/dL
CH	H 31,9	31,8	34,3 pg
CHDW	3,43	3,41	2,94 pg
RDW	12,4	11,9	8,6 %
HDW	3,10	3,01	2,58 g/dL
%Micro	0,4	0,5	0,0
%Macro	0,0	0,0	0,4
%Hypo	0,2	0,1	2,8
%Hyper	7,9	8,1	0,2
%Low CH	7,9	8,1	1,1
%High CH	48,7	47,6	80,6
MCV Delta			17,6
CHCM Delta			-3,9
CH Delta			2,5
CHDW Delta			-0,47
RDW Delta			-3,4
HDW Delta			0,42 g/dL

- Morphology Flags
- MICRO
 - MACRO
 - HYP0
 - HYP0 +
 - HYPER
 - ANISO
 - HC VAR
 - LEFT SHIFT
 - BLASTS
 - ATYPS
 - NRBC
 - IG
 - LARGE PLT
 - PLT CLUMPS
 - MPO DEF
 - RBC FRAG
 - RBC Ghosts

Dopingkjoring Playback
 Aspiration Date/Time 06-Feb-09 11:30:3
 Sample Type PATIENT
 SID ISU0012288B
 Rack & Position 9 2
 Sample Selectivity CBC\DIFF\RETIC
 Age & Sex
 Instrument Number IR07450540
 Species Human
 Sequence 375
FOR LABORATORY USE ONLY

WBC Differential		%	#	
WBC			5,1	x10 ⁹ cells/L
Neut	59,8		3,0	x10 ⁹ cells/L
Lymph	30,0		1,5	x10 ⁹ cells/L
Mono	4,8		0,2	x10 ⁹ cells/L
Eos	2,2		0,1	x10 ⁹ cells/L
Baso	0,4		0,0	x10 ⁹ cells/L
LUC	2,8		0,1	x10 ⁹ cells/L
NRBC	0,0		0,0	x10 ⁹ cells/L
LI			2,03	
MPXI			-14,3	



CBC			
WBC	5,1	x10 ⁹ cells/L	
RBC	4,74	x10 ¹² cells/L	
HGB	14,6	g/dL	
Cellular HGB	15,2	g/dL	
HCT	0,41	L/L	
MCV	87,5	fL	
MCH	30,9	pg	
MCHC	35,3	g/dL	
CHCM	36,6	g/dL	
CH	31,9	pg	
RDW	12,5	%	
HDW	2,86	g/dL	
PLT	397	x10 ⁹ cells/L	
MPV	8,4	fL	
PDW	48,0	%	
PCT	0,003	L/L	

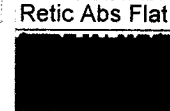
RBC			
RBC	4,74	x10 ¹² cells/L	
%Macro	0,3		
%Micro	0,4		
%Hypo	0,1		
%Hyper	5,0		
%Micro/%Hypo Ratio	6,12		

HGB			
HGB	14,6	g/dL	
Cellular HGB	15,2	g/dL	
HGB Delta	-0,5	g/dL	
HGB Sample Trans	1,909		
HGB Baseline Trans	2,962		
HGB Sample Flatness	30		
HGB Baseline Flatness	3		

Retic		%	#	
Neg RBC	96,42		37704	
Retic	3,58		169,8	x10 ⁹ cells/L
L Retic	77,87		1091	
M Retic	18,34		257	
H Retic	3,78		53	
IRF-H	3,78			
IRF-M+H	22,13			
Retic Cells Acquired			44827	
Retic Cells Analyzed			40632	
Retic Gated Cells			39105	
Retic Count			1401	

Routine Retic			
	%	#	
Retic	3,58	169,8	x10 ⁹ cells/L
CHR		34,2	pg
CHm		31,7	pg

RBC Rate



Retic Rate	HGB Trans

- Sample/System Flags
- B-NO
 - BIFR
 - B-SAT
 - BTO
 - B-NV
 - B-SUSP
 - CHCMCE
 - N-RBC
 - RBCIFR
 - HGB-PL
 - HGBIFR
 - WBC-CE
 - WBCSUB
 - MPO-D
 - PX-NO
 - PX-PL
 - PXIFR
 - PX-SAT
 - PXTO
 - PX-NV
 - RTC-L
 - RTCAD

Retic Parameters			
	Gated	Mature	Retic
MCV	86,4	85,7	103,0 fL
CHCM	H 37,0	37,2 H	33,3 g/dL
CH	H 31,8	31,7	34,2 pg
CHDW	3,42	3,40	2,96 pg
RDW	12,3	11,9	8,9 %
HDW	3,08	2,99	2,57 g/dL
%Micro	0,5	0,5	0,0
%Macro	0,0	0,0	0,4
%Hypo	0,1	0,1	2,3
%Hyper	7,7	7,9	0,1
%Low CH	8,0	8,2	0,9
%High CH	48,0	46,8	78,7
MCV Delta			17,3
CHCM Delta			-3,8
CH Delta			2,5
CHDW Delta			-0,44
RDW Delta			-2,9
HDW Delta			-0,43 g/dL

- Morphology Flags
- MICRO
 - MACRO
 - HYP0
 - HYPER +
 - ANISO
 - HC VAR
 - LEFT SHIFT
 - BLASTS
 - ATYPS
 - NRBC
 - IG
 - LARGE PLT
 - PLT CLUMPS
 - MPO DEF
 - RBC FRAG
 - RBC Ghosts