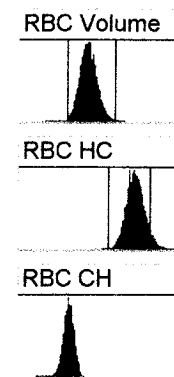
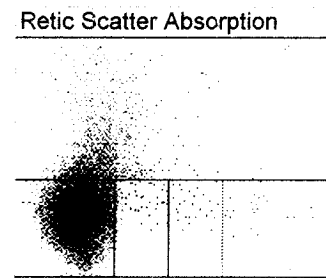
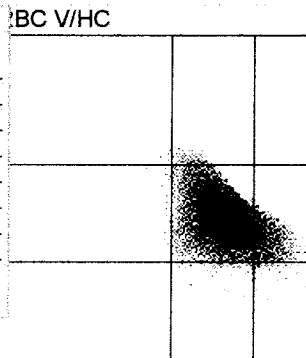


Dopingkjoring Playback
 Aspiration Date/Time 07-Feb-09 19:28:1
 Sample Type PATIENT
 SID ISU0012301/
 Rack & Position 15 1
 Sample Selectivity CBC\DIFF\RETIC
 Age & Sex
 Instrument Number IR07450540
 Species Human
 Sequence 149
FOR LABORATORY USE ONLY

WBC Differential			
	%	#	
WBC		14,0	x10 ⁹ cells/L
Neut	90,5	12,7	x10 ⁹ cells/L
Lymph	4,9	0,7	x10 ⁹ cells/L
Mono	3,5	0,5	x10 ⁹ cells/L
Eos	0,2	0,0	x10 ⁹ cells/L
Baso	0,2	0,0	x10 ⁹ cells/L
LUC	0,7	0,1	x10 ⁹ cells/L
NRBC	0,0	0,0	x10 ⁹ cells/L
LI		2,07	
MPXI		-15,9	



CBC			
WBC	14,0	x10 ⁹ cells/L	
RBC	4,48	x10 ¹² cells/L	
HGB	13,9	g/dL	
Cellular HGB	14,3	g/dL	
HCT	0,39	L/L	
MCV	87,0	fL	
MCH	31,0	pg	
MCHC	35,6	g/dL	
CHCM	36,7	g/dL	
CH	31,8	pg	
RDW	12,6	%	
HDW	2,89	g/dL	
PLT	390	x10 ⁹ cells/L	
MPV	8,4	fL	
PDW	45,1	%	
PCT	L 0,003	L/L	

RBC			
RBC	4,48	x10 ¹² cells/L	
%Macro	0,3		
%Micro	0,4		
%Hypo	0,0		
%Hyper	5,7		
%Micro/%Hypo Ratio	10,93		

HGB			
HGB	13,9	g/dL	
Cellular HGB	14,3	g/dL	
HGB Delta	-0,4	g/dL	
HGB Sample Trans	1,952		
HGB Baseline Trans	2,961		
HGB Sample Flatness	36		
HGB Baseline Flatness	8		

Retic			
	%	#	
Neg RBC	96,16	36593	
Retic	3,84	172,4	x10 ⁹ cells/L
L Retic	79,49	1163	
M Retic	16,34	239	
H Retic	4,17	61	
IRF-H	4,17		
IRF-M+H	20,51		
Retic Cells Acquired		43914	
Retic Cells Analyzed		39511	
Retic Gated Cells		38056	
Retic Count		1463	

Routine Retic			
	%	#	
Retic	3,84	172,4	x10 ⁹ cells/L
CHR		34,3	pg
CHm		31,7	pg

RBC Rate

Retic Abs Flat

Retic Rate

HGB Trans

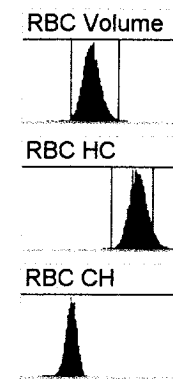
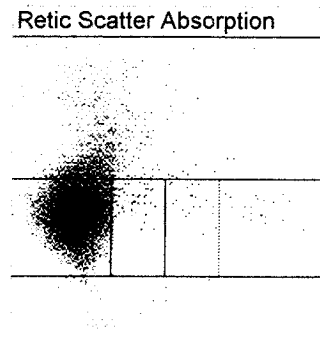
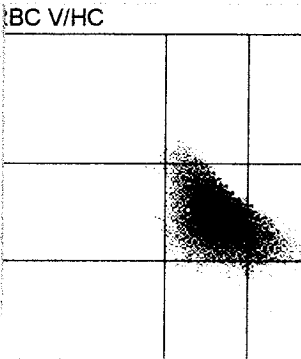
Sample/System Flags
 B-NO
 BIFR
 B-SAT
 BTO
 B-NV
 B-SUSP
 CHCMCE
 N-RBC
 RBCIFR
 HGB-PL
 HGBIFR
 WBC-CE
 WBCSUB
 MPO-D
 PX-NO
 PX-PL
 PXIFR
 PX-SAT
 PXTO
 PX-NV
 RTC-L
 RTCADA

Retic Parameters				
		Gated	Mature	Retic
MCV		85,7	85,0	102,5 fL
CHCM	H	37,3	37,4	33,6 g/dL
CH	H	31,8	31,7	34,3 pg
CHDW		3,38	3,36	2,73 pg
RDW		12,4	11,9	8,7 %
HDW		3,13	3,03	2,47 g/dL
%Micro		0,6	0,6	0,0
%Macro		0,0	0,0	0,1
%Hypo		0,1	0,0	1,1
%Hyper		9,2	9,5	0,5
%Low CH		8,0	8,3	0,5
%High CH		48,2	46,8	81,2
MCV Delta				17,4
CHCM Delta				-3,8
CH Delta				2,6
CHDW Delta				-0,63
RDW Delta				-3,2
HDW Delta				-0,56 g/dL

Morphology Flags
 MICRO
 MACRO
 HYPO
 HYPER +
 ANISO
 HC VAR
 LEFT SHIFT +
 BLASTS
 ATYPS
 NRBC
 IG
 LARGE PLT
 PLT CLUMPS
 MPO DEF
 RBC FRAG
 RBC Ghosts

Dopingkjoring Playback
 Aspiration Date/Time 07-Feb-09 19:29:0
 Sample Type PATIENT
 SID ISU0012301/
 Rack & Position 15 1
 Sample Selectivity CBCDIFFRETIC
 Age & Sex U
 Instrument Number IR07450540
 Species Human
 Sequence 150

WBC Differential		
%	#	
WBC	14,1	x10 ⁹ cells/L
Neut	90,8	12,8 x10 ⁹ cells/L
Lymph	4,7	0,7 x10 ⁹ cells/L
Mono	3,4	0,5 x10 ⁹ cells/L
Eos	0,2	0,0 x10 ⁹ cells/L
Baso	0,2	0,0 x10 ⁹ cells/L
LUC	0,7	0,1 x10 ⁹ cells/L
NRBC	0,0	0,0 x10 ⁹ cells/L
LI	1,90	
MPXI	-15,5	



FOR LABORATORY USE ONLY

CBC		
WBC	14,1	x10 ⁹ cells/L
RBC	4,20	* x10 ¹² cells/L
HGB	13,6	g/dL
Cellular HGB	13,4	g/dL
HCT	0,37	* L/L
MCV	86,9	* fL
MCH	32,3	* pg
MCHC	37,1	* g/dL
CHCM	36,8	* g/dL
CH	31,8	* pg
RDW	12,6	* %
HDW	2,91	* g/dL
PLT	372	* x10 ⁹ cells/L
MPV	8,4	* fL
PDW	48,5	* %
PCT L	0,003	* L/L

RBC		
RBC	4,20	* x10 ¹² cells/L
%Macro	0,3	
%Micro	0,4	
%Hypo	0,0	
%Hyper	6,2	
%Micro/%Hypo Ratio	13,64	

HGB		
HGB	13,6	g/dL
Cellular HGB	13,4	g/dL
HGB Delta	0,1	g/dL
HGB Sample Trans	1,974	
HGB Baseline Trans	2,962	
HGB Sample Flatness	61	
HGB Baseline Flatness	4	

Retic		
	%	#
Neg RBC	96,50	35236
Retic	3,50	147,1 x10 ⁹ cells/L
L Retic	80,53	1030
M Retic	15,95	204
H Retic	3,52	45
IRF-H	3,52	
IRF-M+H	19,47	
Retic Cells Acquired		42181
Retic Cells Analyzed		37852
Retic Gated Cells		36515
Retic Count		1279

Routine Retic			
	%	#	
Retic	3,50	147,1	x10 ⁹ cells/L
CHr		34,2	pg
CHm		31,6	pg

RBC Rate

Retic Abs Flat

Retic Rate

HGB Trans

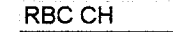
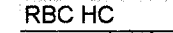
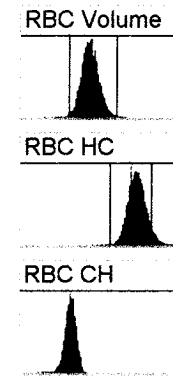
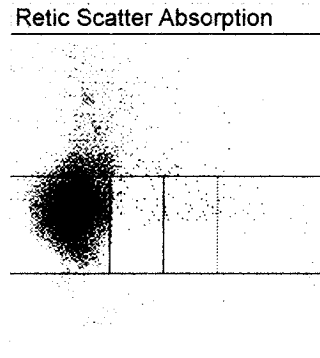
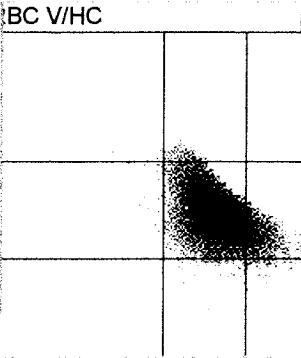
Sample/System Flags											
B-NO											
BIFR											
B-SAT											
BTO											
B-NV											
B-SUSP											
CHCMCE											
N-RBC											
RBCIFR	CHCM	HCT	HDW	MCH	MCHC	MCV	MPV	PCT	PDW	PLT	RBC
	RDW	CH	CHDW								
HGB-PL											
HGBIFR											
WBC-CE											
WBCSUB											
MPO-D											
PX-NO											
PX-PL											
PXIFR											
PX-SAT											
PXTO											
PX-NV											
RTC-L											

Retic Parameters				Morphology Flags	
	Gated	Mature	Retic		
MCV	85,5	84,9	102,3	fL	
CHCM H	37,3	37,5	33,6	g/dL	
CH H	31,7	31,6	34,2	pg	
CHDW	3,38	3,36	2,92	pg	
RDW	12,4	12,0	8,8	%	
HDW	3,15	3,06	2,51	g/dL	
%Micro	0,6	0,6	0,0		
%Macro	0,0	0,0	0,0		
%Hypo	0,1	0,0	1,2		
%Hyper	9,4	9,7	0,5		
%Low CH	8,3	8,6	0,9		
%High CH	47,7	46,5	80,5		
MCV Delta			17,4		
CHCM Delta			-3,9		
CH Delta			2,6		
CHDW Delta			-0,45		
RDW Delta			-3,2		
HDW Delta			-0,55	g/dL	

MICRO	
MACRO	
HYP0	
HYPER	+
ANISO	
HC VAR	
LEFT SHIFT	+
BLASTS	
ATYPS	
NRBC	
IG	
LARGE PLT	
PLT CLUMPS	
MPO DEF	
RBC FRAG	
RBC Ghosts	

Dopingkjoring Playback
 Aspiration Date/Time 07-Feb-09 19:42:5
 Sample Type PATIENT
 SID ISU0012301/
 Rack & Position 9 1
 Sample Selectivity CBC\DIFFRETIC
 Age & Sex U
 Instrument Number IR07450540
 Species Human
 Sequence 159
FOR LABORATORY USE ONLY

WBC Differential			
	%	#	
WBC		13,9	x10 ⁹ cells/L
Neut	91,0	12,7	x10 ⁹ cells/L
Lymph	4,9	0,7	x10 ⁹ cells/L
Mono	3,1	0,4	x10 ⁹ cells/L
Eos	0,1	0,0	x10 ⁹ cells/L
Baso	0,2	0,0	x10 ⁹ cells/L
LUC	0,6	0,1	x10 ⁹ cells/L
NRBC	0,0	0,0	x10 ⁹ cells/L
LI		1,87	
MPXI		-15,6	



CBC			
WBC	13,9	x10 ⁹ cells/L	
RBC	4,45	x10 ¹² cells/L	
HGB	13,8	g/dL	
Cellular HGB	14,2	g/dL	
HCT	0,39	L/L	
MCV	87,2	fL	
MCH	31,1	pg	
MCHC	35,6	g/dL	
CHCM	36,7	g/dL	
CH	31,9	pg	
RDW	12,7	%	
HDW	2,89	g/dL	
PLT	367	x10 ⁹ cells/L	
MPV	8,5	fL	
PDW	47,0	%	
PCT	L 0,003	L/L	

RBC			
RBC	4,45	x10 ¹² cells/L	
%Macro	0,3		
%Micro	0,5		
%Hypo	0,0		
%Hyper	5,8		
%Micro/%Hypo Ratio	10,24		

HGB			
HGB	13,8	g/dL	
Cellular HGB	14,2	g/dL	
HGB Delta	-0,4	g/dL	
HGB Sample Trans	1,955		
HGB Baseline Trans	2,959		
HGB Sample Flatness	63		
HGB Baseline Flatness	13		

Retic			
	%	#	
Neg RBC	96,66	36691	
Retic	3,34	148,7	x10 ⁹ cells/L
L Retic	77,86	988	
M Retic	17,81	226	
H Retic	4,33	55	
IRF-H	4,33		
IRF-M+H	22,14		
Retic Cells Acquired		43845	
Retic Cells Analyzed		39447	
Retic Gated Cells		37960	
Retic Count		1269	

Routine Retic			
	%	#	
Retic	3,34	148,7	x10 ⁹ cells/L
CHr		34,1	pg
CHm		31,8	pg

RBC Rate

Retic Abs Flat

Retic Rate

HGB Trans

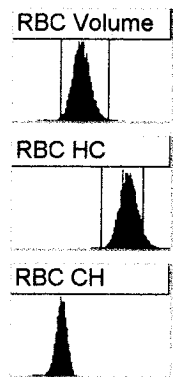
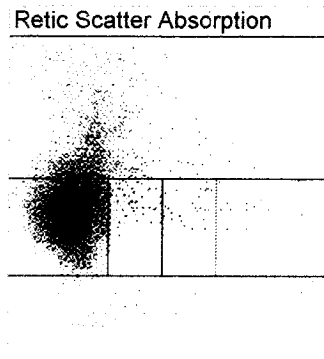
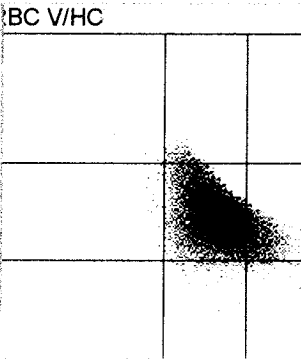
- Sample/System Flags
- B-NO
 - BIFR
 - B-SAT
 - BTO
 - B-NV
 - B-SUSP
 - CHCMCE
 - N-RBC
 - RBCIFR
 - HGB-PL
 - HGBIFR
 - WBC-CE
 - WBCSUB
 - MPO-D
 - PX-NO
 - PX-PL
 - PXIFR
 - PX-SAT
 - PXTO
 - PX-NV
 - RTC-L
 - RTCADA

Retic Parameters				
	Gated	Mature	Retic	
MCV	85,8	85,2	102,3	fL
CHCM	H 37,4	37,5	H 33,4	g/dL
CH	H 31,8	31,8	34,1	pg
CHDW	3,39	3,38	2,78	pg
RDW	12,4	12,0	8,9	%
HDW	3,15	3,05	2,49	g/dL
%Micro	0,6	0,6	0,1	
%Macro	0,0	0,0	0,1	
%Hypo	0,1	0,0	1,6	
%Hyper	9,7	10,0	0,3	
%Low CH	7,8	8,1	0,8	
%High CH	49,0	47,9	79,4	
MCV Delta			17,1	
CHCM Delta			-4,0	
CH Delta			2,3	
CHDW Delta			-0,60	
RDW Delta			-3,1	
HDW Delta			-0,56	g/dL

- Morphology Flags
- MICRO
 - MACRO
 - HYPO
 - HYPER +
 - ANISO
 - HC VAR
 - LEFT SHIFT ++
 - BLASTS
 - ATYPS
 - NRBC
 - IG
 - LARGE PLT
 - PLT CLUMPS
 - MPO DEF
 - RBC FRAG
 - RBC Ghosts

Dopingkjoring Playback
 Aspiration Date/Time 07-Feb-09 19:43:4
 Sample Type PATIENT
 SID ISU0012301/
 Rack & Position 9 1
 Sample Selectivity CBC/DIFF/RETIC
 Age & Sex U
 Instrument Number IR07450540
 Species Human
 Sequence 160
FOR LABORATORY USE ONLY

WBC Differential			
	%	#	
WBC		13,8	x10 ⁹ cells/L
Neut	89,9	12,4	x10 ⁹ cells/L
Lymph	5,3	0,7	x10 ⁹ cells/L
Mono	3,9	0,5	x10 ⁹ cells/L
Eos	0,1	0,0	x10 ⁹ cells/L
Baso	0,2	0,0	x10 ⁹ cells/L
LUC	0,6	0,1	x10 ⁹ cells/L
NRBC			x10 ⁹ cells/L
LI		2,18	
MPXI		-15,6	



CBC			
WBC	13,8	x10 ⁹ cells/L	
RBC	4,52	x10 ¹² cells/L	
HGB	14,0	g/dL	
Cellular HGB	14,5	g/dL	
HCT	0,39	L/L	
MCV	87,1	fL	
MCH	30,9	pg	
MCHC	35,5	g/dL	
CHCM	36,8	g/dL	
CH	31,9	pg	
RDW	12,7	%	
HDW	2,89	g/dL	
PLT	404	x10 ⁹ cells/L	
MPV	8,4	fL	
PDW	47,6	%	
PCT L	0,003	L/L	

RBC			
RBC	4,52	x10 ¹² cells/L	
%Macro	0,3		
%Micro	0,5		
%Hypo	0,0		
%Hyper	5,8		
%Micro/%Hypo Ratio	9,78		

HGB			
HGB	14,0	g/dL	
Cellular HGB	14,5	g/dL	
HGB Delta	-0,5	g/dL	
HGB Sample Trans	1,946		
HGB Baseline Trans	2,960		
HGB Sample Flatness	76		
HGB Baseline Flatness	6		

Retic			
	%	#	
Neg RBC	96,54	37280	
Retic	3,46	156,7	x10 ⁹ cells/L
L Retic	78,76	1053	
M Retic	17,28	231	
H Retic	3,96	53	
IRF-H	3,96		
IRF-M+H	21,24		
Retic Cells Acquired		44468	
Retic Cells Analyzed		40158	
Retic Gated Cells		38617	
Retic Count		1337	

Routine Retic			
	%	#	
Retic	3,46	156,7	x10 ⁹ cells/L
CHr		34,2	pg
CHm		31,8	pg

RBC Rate

Retic Abs Flat

Retic Rate

HGB Trans

Sample/System Flags
 B-NO
 BIFR
 B-SAT
 BTO
 B-NV
 B-SUSP
 CHCMCE
 N-RBC
 RBCIFR
 HGB-PL
 HGBIFR
 WBC-CE
 WBCSUB
 MPO-D
 PX-NO
 PX-PL
 PXIFR
 PX-SAT
 PXTO
 PX-NV
 RTC-L
 RTCADA

Retic Parameters				
	Gated	Mature	Retic	
MCV	86,0	85,4	102,3	fL
CHCM H	37,3	37,4	33,5	g/dL
CH H	31,8	31,8	34,2	pg
CHDW	3,41	3,40	2,77	pg
RDW	12,5	12,1	8,9	%
HDW	3,13	3,03	2,56	g/dL
%Micro	0,6	0,6	0,1	
%Macro	0,0	0,0	0,1	
%Hypo	0,1	0,1	0,9	
%Hyper	9,2	9,4	0,4	
%Low CH	8,0	8,2	0,6	
%High CH	49,0	47,9	79,1	
MCV Delta			16,9	
CHCM Delta			-3,9	
CH Delta			2,4	
CHDW Delta			-0,63	
RDW Delta			-3,2	
HDW Delta			-0,47	g/dL

Morphology Flags
 MICRO
 MACRO
 HYPO
 HYPER +
 ANISO
 HC VAR
 LEFT SHIFT +
 BLASTS
 ATYPS
 NRBC
 IG
 LARGE PLT
 PLT CLUMPS
 MPO DEF
 RBC FRAG
 RBC Ghosts